



Installation Guide

Aura12

Version:1.0

Due to ongoing improvements in our products, ZKTeco cannot guarantee this installation guide precisely matches the referenced product's current specifications.



1600 Union Hill Rd., Alpharetta GA 30005

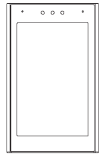
Phone: (862) 505 - 2101 | Fax: (862) 204 - 5906 | info@zktecousa.com | www.zktecousa.com

Copyright 2020 ZKTeco Inc. ZKTeco Logo and ZKTeco USA Logo have registered trademarks of ZKTeco or a related company.

All other products and company names mentioned are used for identification purposes only and may be trademarks of their respective owners. All specifications are subject to change without notice. All rights reserved

Copyright © 2023 ZKTECO USA, LTD. All Rights Reserved.

1. What's in the Box?



Aura12



DM10



Type C Cable



PoE Splitter



Power Cord
(one to two)



Connection Wire
(for DM10)



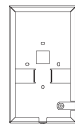
Power Cord



Power Adapter



Black Plate



Back Box



Screw Kit
for DM10



Screw Kit
for Aura12



Foam
Padding



Torx
Screwdriver



Terminal
Head



Mounting
Template



Installation
Guide



Software
Registration
Info Card

1. Tap on **Update Software** (this may take up to 5 min).
2. Tap on **Test: IP Address** to make sure there is a good internet connection.
3. Tap on **Test** buttons for the Relays that are being used.
This will activate the doorstrike(s) so the installer can verify that the hardware is connected properly.
4. Enter Activation Code.

8. Activation

You need to activate the Aura12 with Whoop software for first time use.

Whoop Console

-Log into the **Whoop Admin Console** at www.console.whoop.ai or simply use your phone to scan the QR code below:



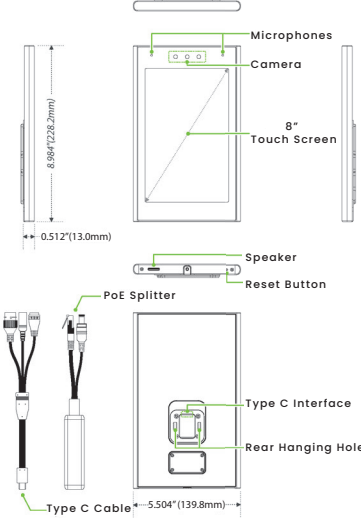
- Click on **Installation Pending** (if not logged as an Admin)
- Find the building & door being installed in the list and click on **Configure Entrance**.

Now, follow these steps:

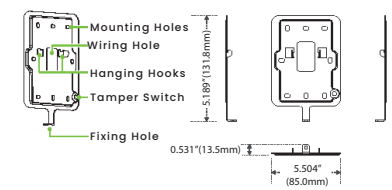
1. Confirm Entrance Information.
2. Upload Electric Room Photos.
3. Upload Entrance Photo.
4. Use the dropdown to indicate which relay(s) are being used and then **test on Aura12**(see below).
5. Click on **Get Activation Code** and enter on the Aura12 Installation screen.

2. Overview

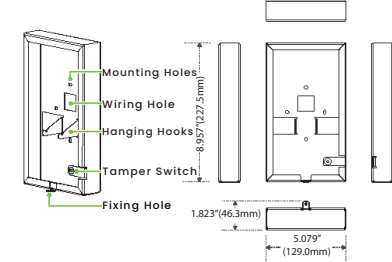
Aura12



Back Plate



Back Box



3. Device Installation

Tools needed

To install the device you must have:

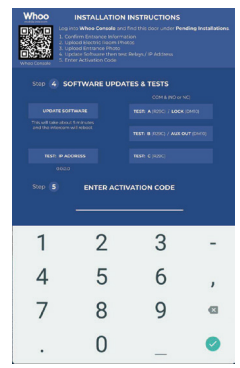
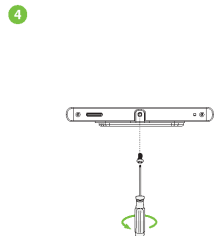
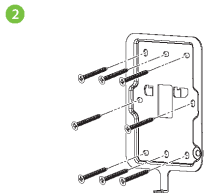
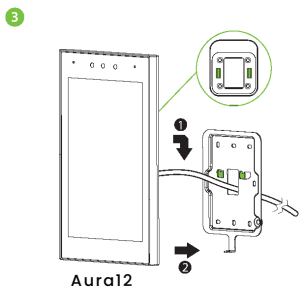
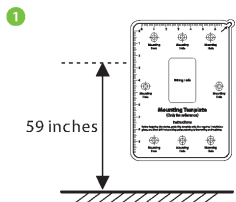
- **Screwdriver:** To install the screws to fasten the DM10 or the back plate/back box of Aura12 on the wall.
- **Pencil:** To mark the installation height.
- **Electric Drill:** To drill holes according to the mounting template.
- **Measuring tape:** To measure the installation height.
- **Ethernet Cable:** To connect the device to a router/modem.



Note: Tools not included. Must be provided by the installer.

❖ Install on the wall via back plate

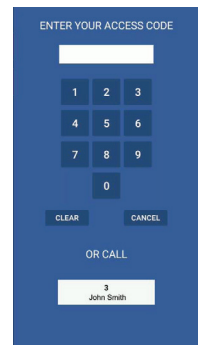
- 1 Attach the mounting template sticker to the wall, and drill holes according to the mounting paper. The recommended distance of the intercom's camera from the ground is 59 inches. The user can adjust the height according to the actual needs.
- 2 Fasten the back plate on the wall using wall mounting screws.
- 3 After passing the wires through the wiring hole and connecting them to the intercom, attach the intercom to the back plate from top to bottom.
- 4 Fasten the intercom to the back plate with a security screw.



Aura12 is successfully provisioned if the screen shows a few resident test buttons.

Note: These buttons are not connected to any particular Aura12 initially, so testing should be done by adding residents using the **Whoop Admin Console** and pairing an Aura12 to one of the test resident buttons.

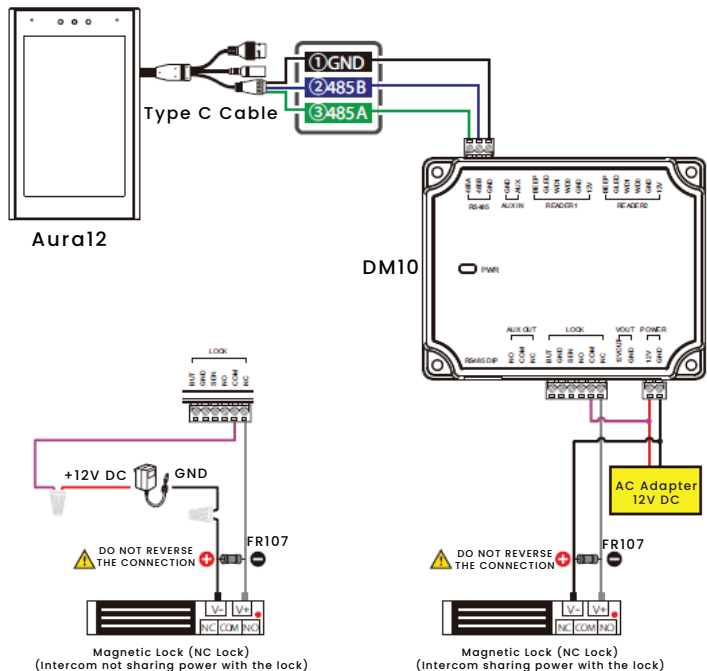
Tapping on a button will call an an Aura12. Alternatively, long pressing the button will prompt to enter a keyless access entry code to open the door (the keyless access code for a specific button can be found in the Whoop app home screen).



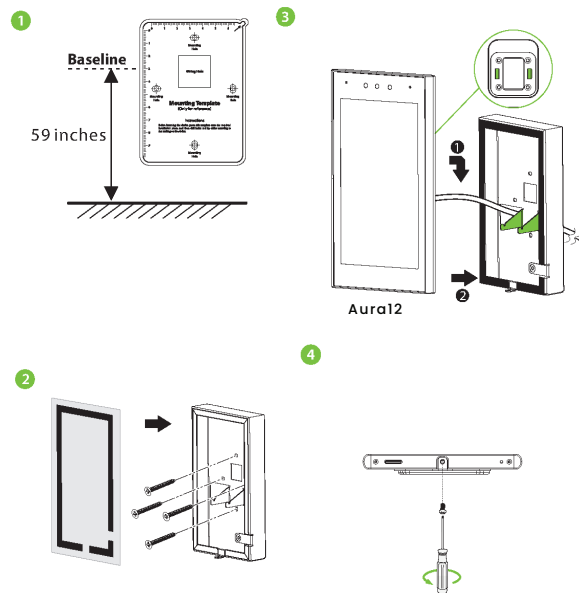
7. DM10, Lock Relay Connection

❖ Install on the wall via back box

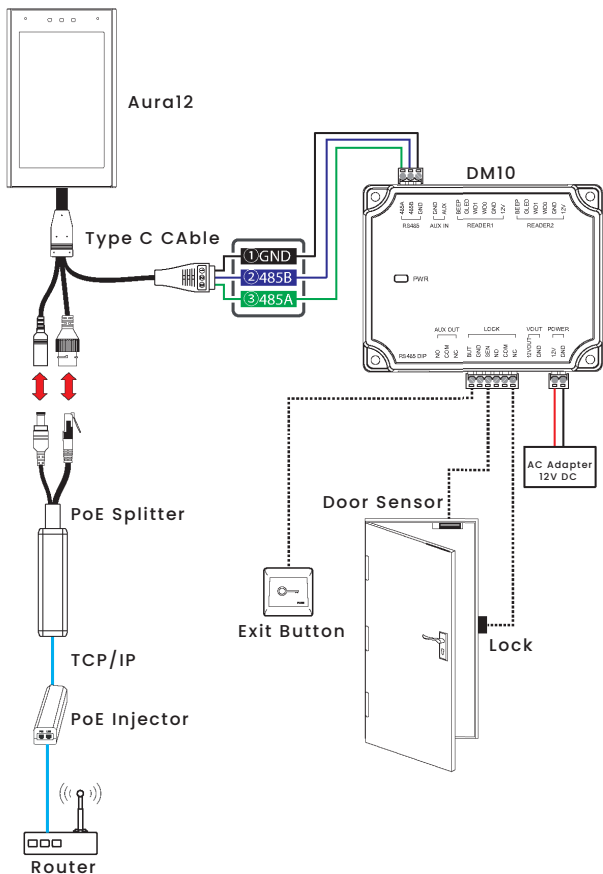
The intercom can communicate with DM10 via RS485. The system supports **Normally Opened Lock** and **Normally Closed Lock**. The **NO LOCK** (normally opened at power on) is connected with 'NO' and 'COM' terminals, and the **NC LOCK** (normally closed at power on) is connected with 'NC' and 'COM' terminals. Reference NC Lock in below diagram:



- ① Affix the mounting template sticker to the wall, and drill holes according to the mounting paper. The recommended distance of the intercom's camera from the ground is 59 inches. The user can adjust the height according to the actual needs.
- ② Connect the back box on the wall using wall mounting screws. Take out the Foam Padding cotton and stick it on the back box.
- ③ After passing the wires through the wiring hole and connecting them to the intercom, attach the intercom to the back box from top to bottom.
- ④ Fasten the intercom to the back box with a security screw.

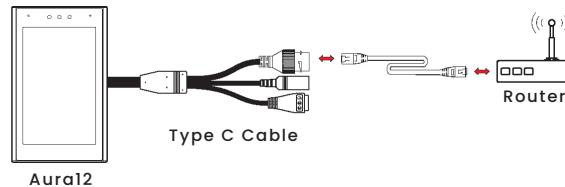


4. Standalone Installation



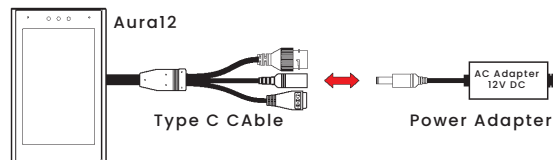
5. Ethernet Connection

Connect the intercom to the router/modem with an Ethernet cable as shown in the example below:

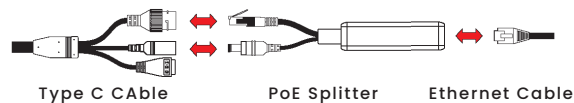


6. Power Connection

There are two power supply methods for this intercom as shown in the figure below.



Mode1: Connect directly to the power adapter



Mode2: Power the device through the PoE Splitter.

- Recommended AC adapter: **12V, 3A**
- To share the power with other devices, use a AC adapter with high current ratings.